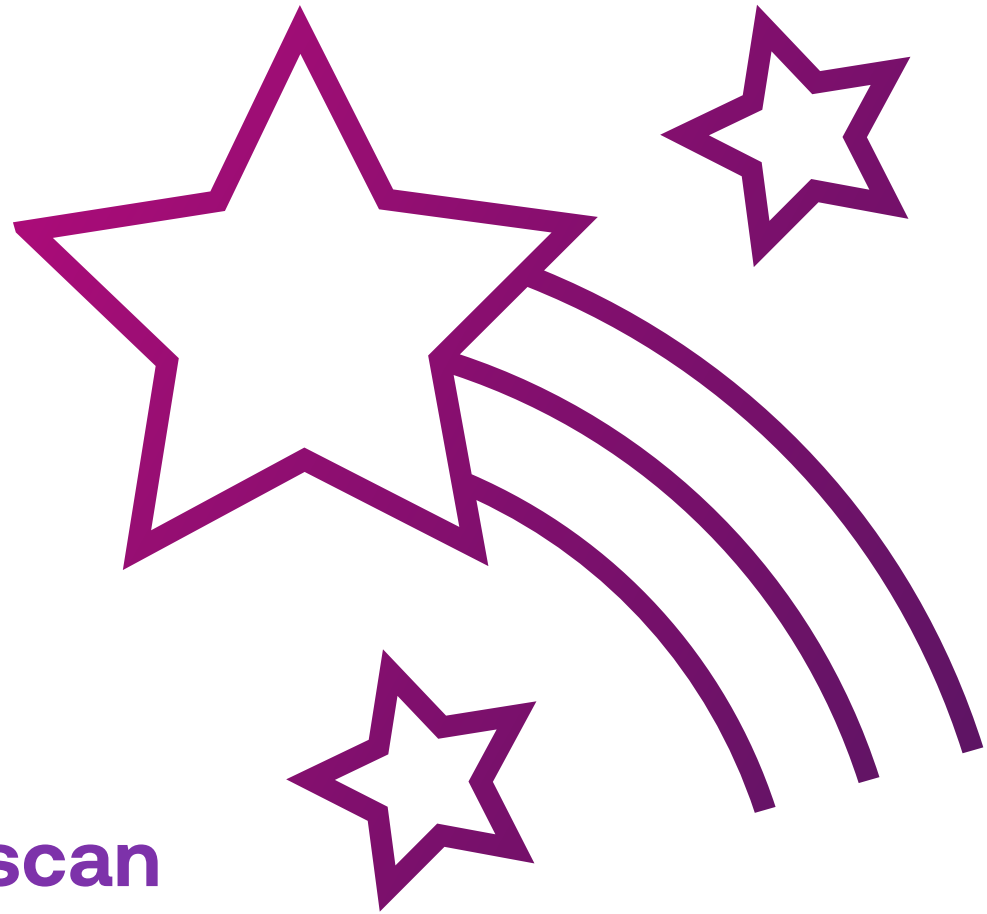


Time for pictures!

You're going to get a PET scan of your brain. Here's what that's all about.



What is a PET scan?

A PET scan is a camera that looks like a big circle that takes pictures of the inside of your body. Getting a PET scan does not hurt. A technologist (also called a tech for short) will be helping you and taking your pictures during the scan.



Arriving at the hospital

When you come to the hospital for your PET scan, you and your caregiver will check in at the PET scan department. Both of you will get a bracelet to wear. The bracelet will have your name and birthday on it.



The process

The first step

The radiology tech is going to make sure you haven't had anything to eat today. It's OK to drink water!

The second step

The tech will need to make sure that you don't have too much sugar in your body. The tech will check the sugar in your body by checking your blood. The best way to check your blood sugar is with a finger poke.

These are the things you'll see for your finger poke. (If you already have an IV, we usually don't need to do the finger poke.)

The tech will clean your finger with a cold wet wipe. You'll feel a quick pinch and a squeeze on your finger. Your drop of blood will be placed onto a paper that is connected to a blood reading machine.



The third step

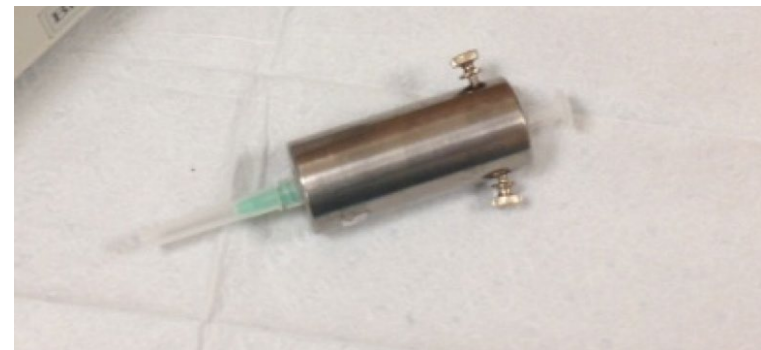
The tech will need to put a small medicine straw into your vein. The tech will do this by wrapping a blue, stretchy band called a tourniquet around your arm. This will help the tech see and feel your veins easier. Then, the tech will clean your skin with a cold wet wipe. You'll feel a pinch when the straw goes into your body.

The fourth step

Once the straw is in, it's now time to give you a sugar liquid called "radioisotope."

The radioisotope comes in a small box. Inside the box is a syringe. The syringe attaches to your IV medicine straw. The syringe is covered with a silver cap to protect the sugar liquid.

The liquid in the syringe is made just for you! The amount of sugar liquid you'll get depends on how much you weigh! The liquid doesn't hurt when it goes inside the IV straw. The radioisotope does not make you feel any different.



What now?

- 1.** You will rest for 20 minutes. During this time, you'll need to rest your body and mind. This part is very important. Resting means trying not to move your body, keeping the lights off, TV off, phone off and not playing on or using your tablet or iPad.
- 2.** After 20 minutes, the tech will come into the room very quietly and give you the radioisotope through your IV medicine straw. This will not hurt. Remember the tech will not talk to you. It's important to keep resting.
- 3.** After you get the radioisotope, you will then rest for 50 minutes. Again, this part is very important.
- 4.** After the 50 minutes is up, the tech will come in to quietly walk you into the room with the PET scanner.



The PET scan room

Once you are in the room with the PET scanner, you will lie down on the PET scanner bed. There is a pillow for your head, a warm blanket and sometimes a gray seat belt that goes over your lap. You will rest your arms down by your sides. You will go into the scanner head first.

The PET scanner bed will move into the open circle so it can start taking pictures of your brain. It takes 10 minutes to take the pictures.

It is important to remember that during the pictures, you need to keep resting and hold your body and head as still as you can.



Our child life specialists are here to help

Child life specialists can help reduce a child's fear associated with the hospital environment. They do this through therapeutic play, developmentally appropriate medical preparation and coping support. They can help you and your family understand what to expect during a PET scan.



Questions?

After reading this, you might have questions. Feel free to write them down (by yourself or with the help of your caregiver) and bring them with you to the hospital. We will make sure all your questions are answered before we start!



.....

.....

.....

.....

.....

.....

.....

.....



GREAT JOB!

That's the end of the
PET scan of your brain.
You're all done.

