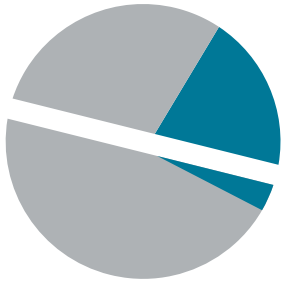
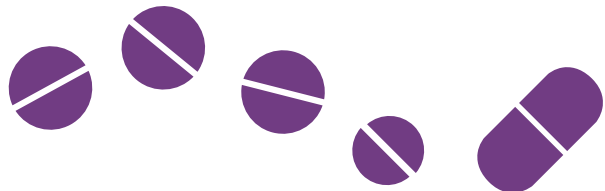


# N ■ Antibiotics are not ■ benign or risk-neutral



**A 30% cut in broad-spectrum antibiotic use would prevent 26% of *Clostridium difficile* infections related to inpatient antibiotic use.**



**1 in every 5 emergency department visits for medication adverse effects is related to an antibiotic.**



**23,000 deaths and 2 million illnesses each year in the U.S. are attributed to infections caused by antibiotic-resistant bacteria.**

**Antibiotic resistance is everyone's problem.**

For more information, visit [I-Connect](#) and search "antibiotic stewardship."

Creating **Antibiotic Rx** Excellence

**N ■ NOVANT<sup>®</sup>**  
**HEALTH**

