



Ground floor

Brunswick Medical Center

240 Hospital Drive NE
Bolivia, NC 28422
910-721-1000
NovantHealth.org

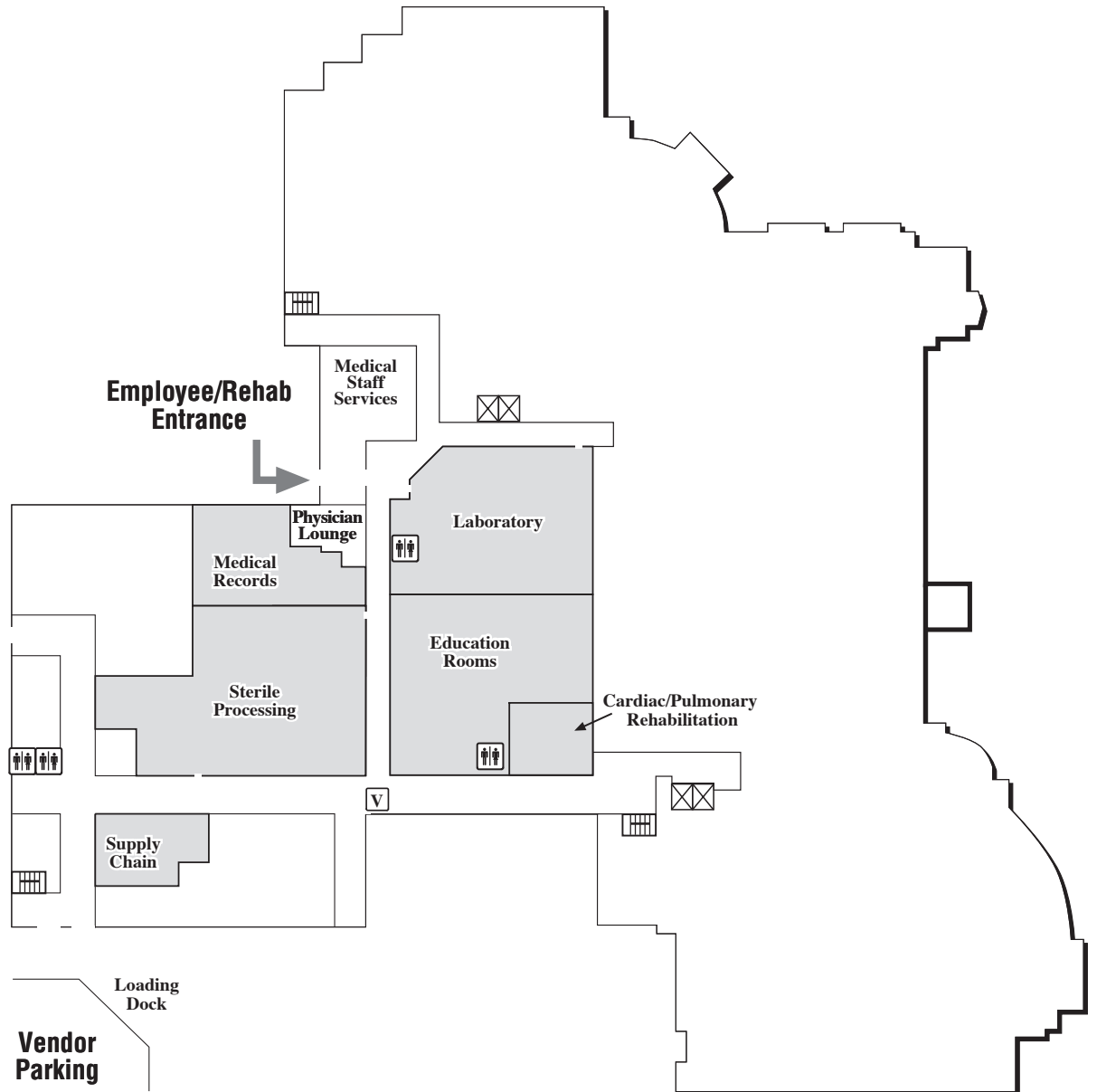
	Elevators		Business Center
	Stairs		Waiting Areas
	Hallways		Vending
	Information/ Nurses Station		Food Service
	Restrooms		Automatic Teller Machine

Tobacco-free Campus

Departments:

Cardiac & Pulmonary
Rehabilitation
Education Rooms
Medical Records
Laboratory

**Employee/Rehab
Parking**

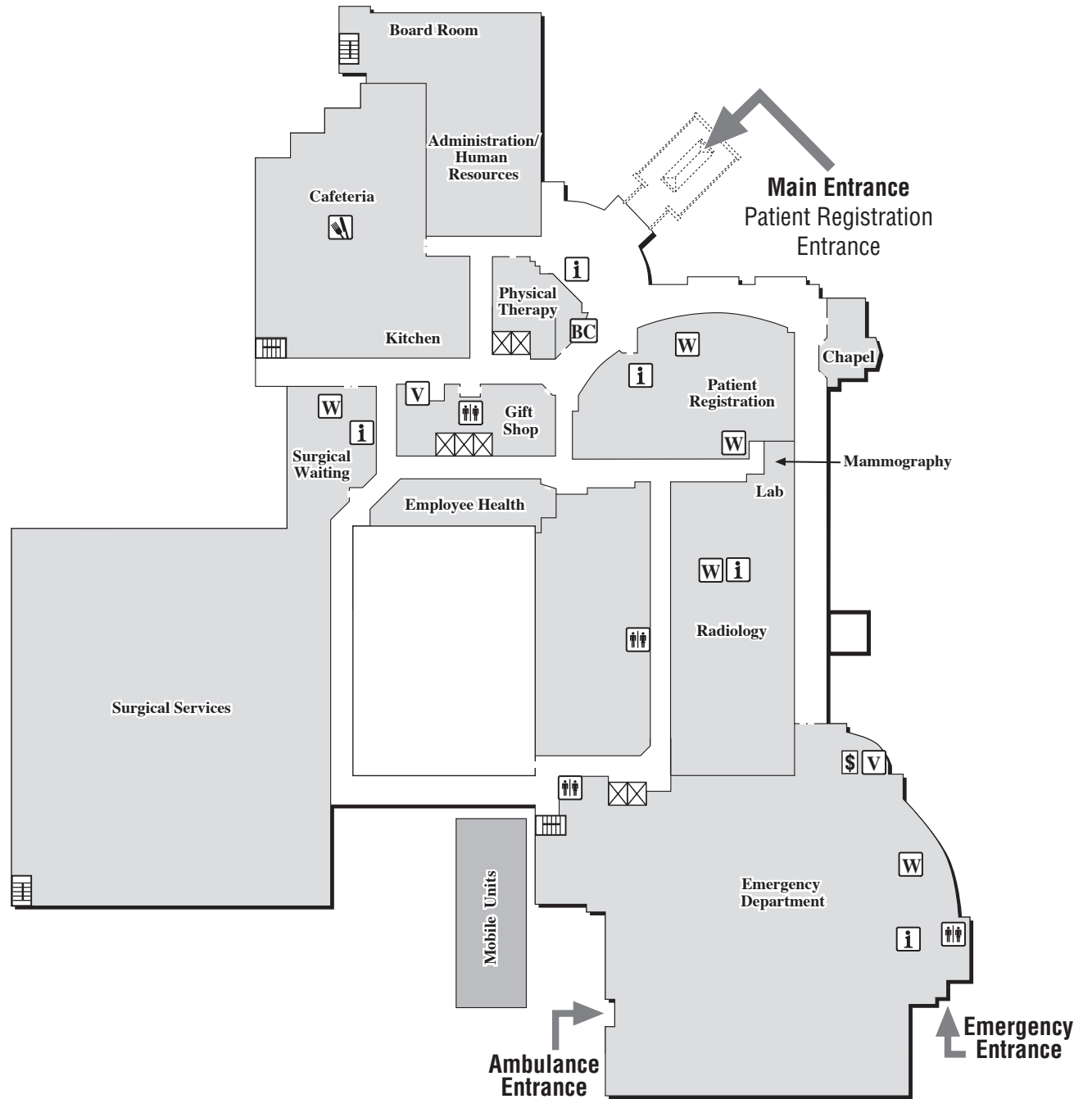




First floor

Brunswick Medical Center

240 Hospital Drive NE
Bolivia, NC 28422
910-721-1000
NovantHealth.org



	Elevators		Business Center
	Stairs		Waiting Areas
	Hallways		Vending
	Information/ Nurses Station		Food Service
	Restrooms		
	Automatic Teller Machine		

Tobacco-free Campus

Departments:

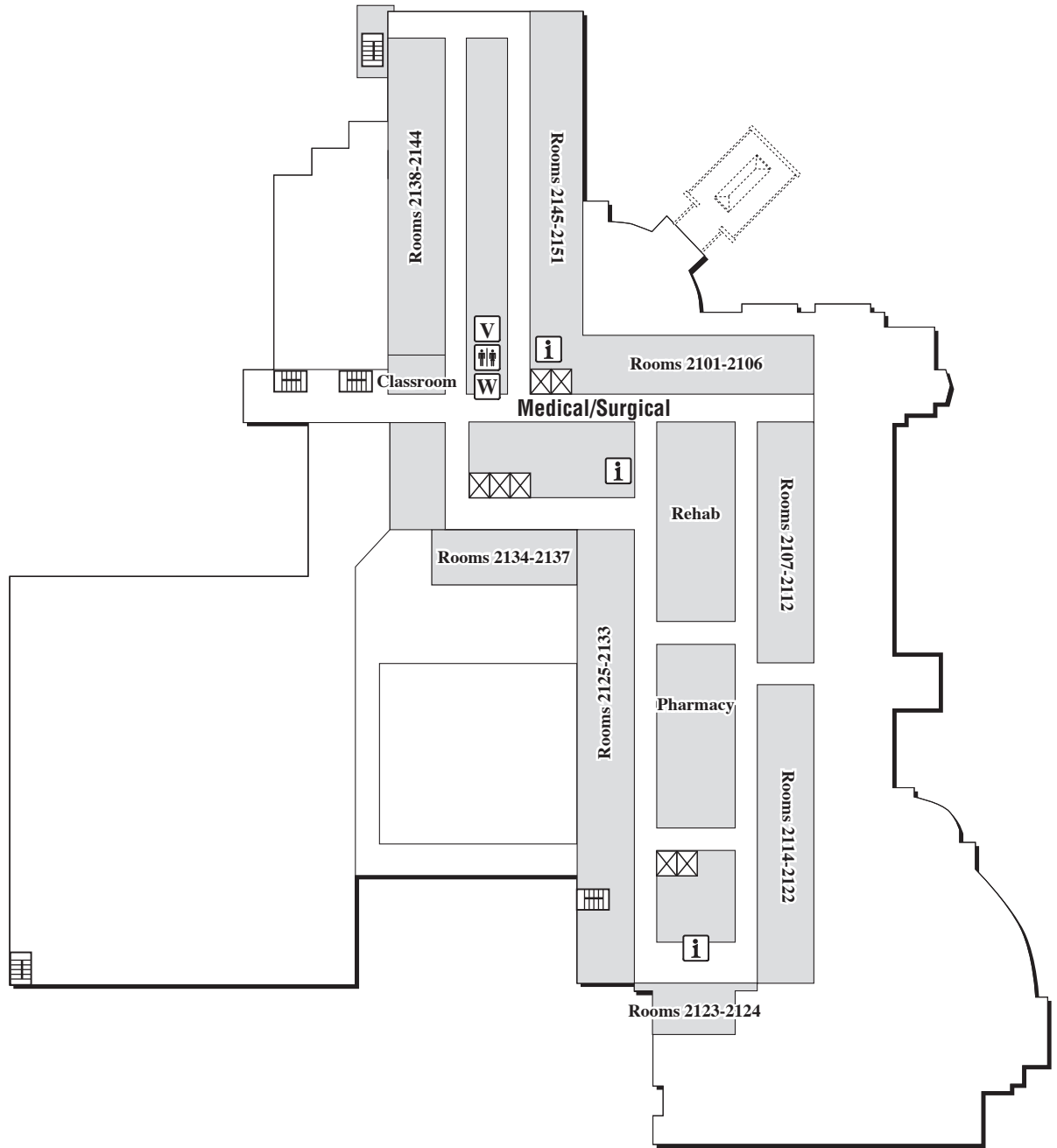
Emergency Department
Radiology
Physical Therapy
Surgical Services



Second floor

Brunswick Medical Center

240 Hospital Drive NE
Bolivia, NC 28422
910-721-1000
NovantHealth.org



	Elevators		Business Center
	Stairs		Waiting Areas
	Hallways		Vending
	Information/ Nurses Station		Food Service
	Restrooms		
	Automatic Teller Machine		

Tobacco-free Campus

Departments:
Medical/Surgical
Pharmacy
Rehabilitation

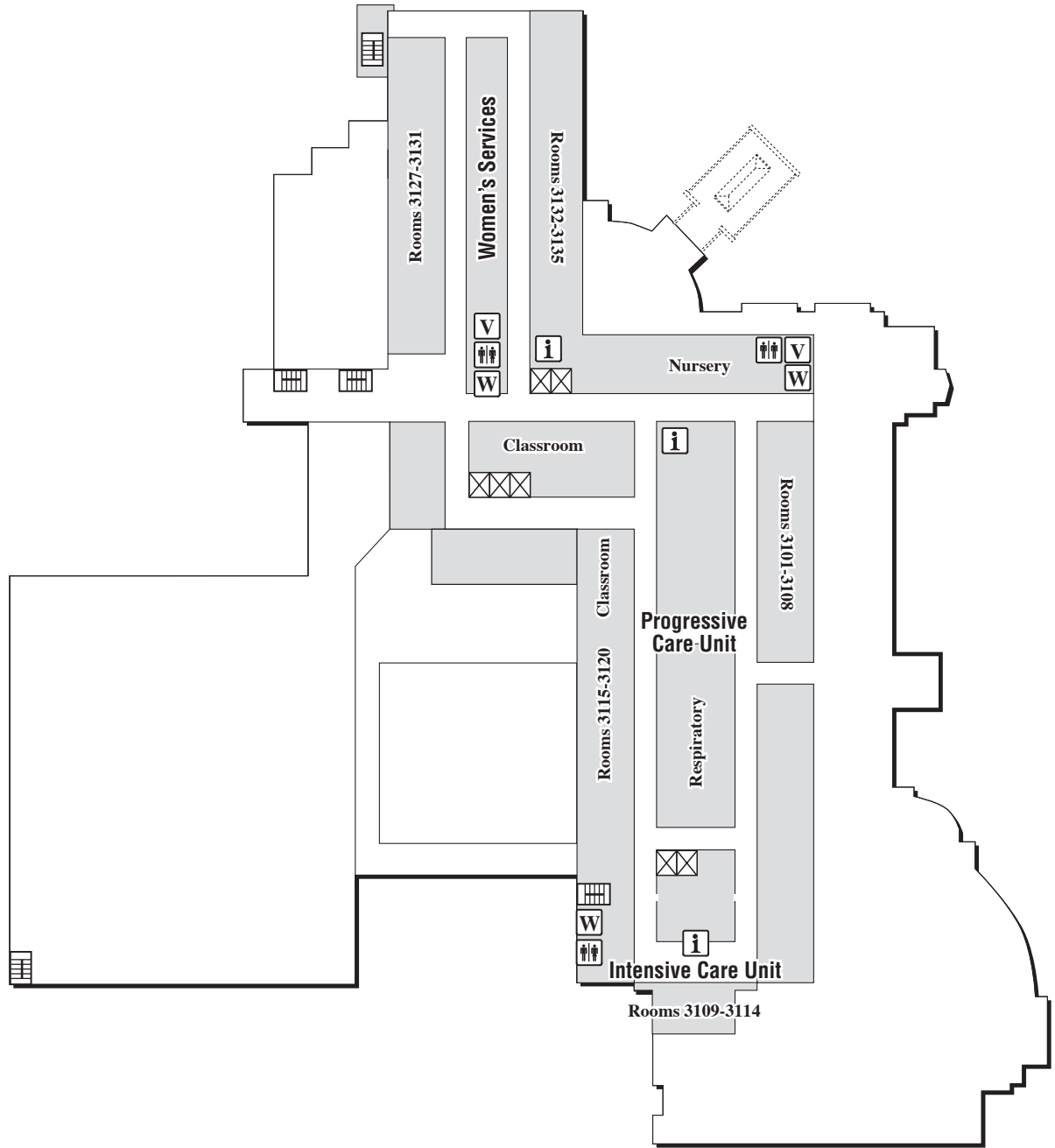




Third floor

Brunswick Medical Center

240 Hospital Drive NE
Bolivia, NC 28422
910-721-1000
NovantHealth.org



	Elevators		Business Center
	Stairs		Waiting Areas
	Hallways		Vending
	Information/ Nurses Station		Food Service
	Restrooms		Automatic Teller Machine

Tobacco-free Campus

Departments:

- Women's Services
- Progressive Care
- Intensive Care
- Respiratory